



Strengthening Pediatric Reunification Through School Nurses and Hospital Partnerships

Ensuring Safety and Well-Being Through Collaboration

September 10, 2025



**EMERGENCY
PREPAREDNESS**
INTERAGENCY COLLABORATIVE



Introductions

Shadlie Kensrue, MSN, RN, CSN, PHN

Director, Health Services

Irvine Unified School District

Irvine, CA

shadliekensrue@iusd.org



IRVINE UNIFIED
SCHOOL DISTRICT

Chris Riccardi, CHSP, CHEP

Manager, Emergency Management & Business

Continuity

Rady Children's Health, Orange

Orange, CA

criccardi@choc.org



Disclosure of Relevant Financial Relationships

Shadlie Kensrue, MSN, RN, CSN, PHN reports no relevant financial relationships or relationships she has with ineligible companies of any amount during the past 24 months.

Chris Riccardi, CHSP, CHEP reports no relevant financial relationships or relationships he has with ineligible companies of any amount during the past 24 months.

Inception



- Emergency Preparedness Interagency Collaborative (EPIC)
- Initiated by Irvine Unified School District
- Formed Hospital Liaison Sub -Group to include Hospitals
- Developed cohesive partnerships
- Identified common mission across modalities
- Uncovered the missing link in patient identification/reunification





Importance of Collaboration

- Increasing natural disaster & emergencies
- Amount of time children spend at school
- Schools assume custodial responsibility in the absence of parents
- Need for a robust partnership to ensure child and family safety
- Collaborative planning efforts
- Community response integration





Role of School Nurses

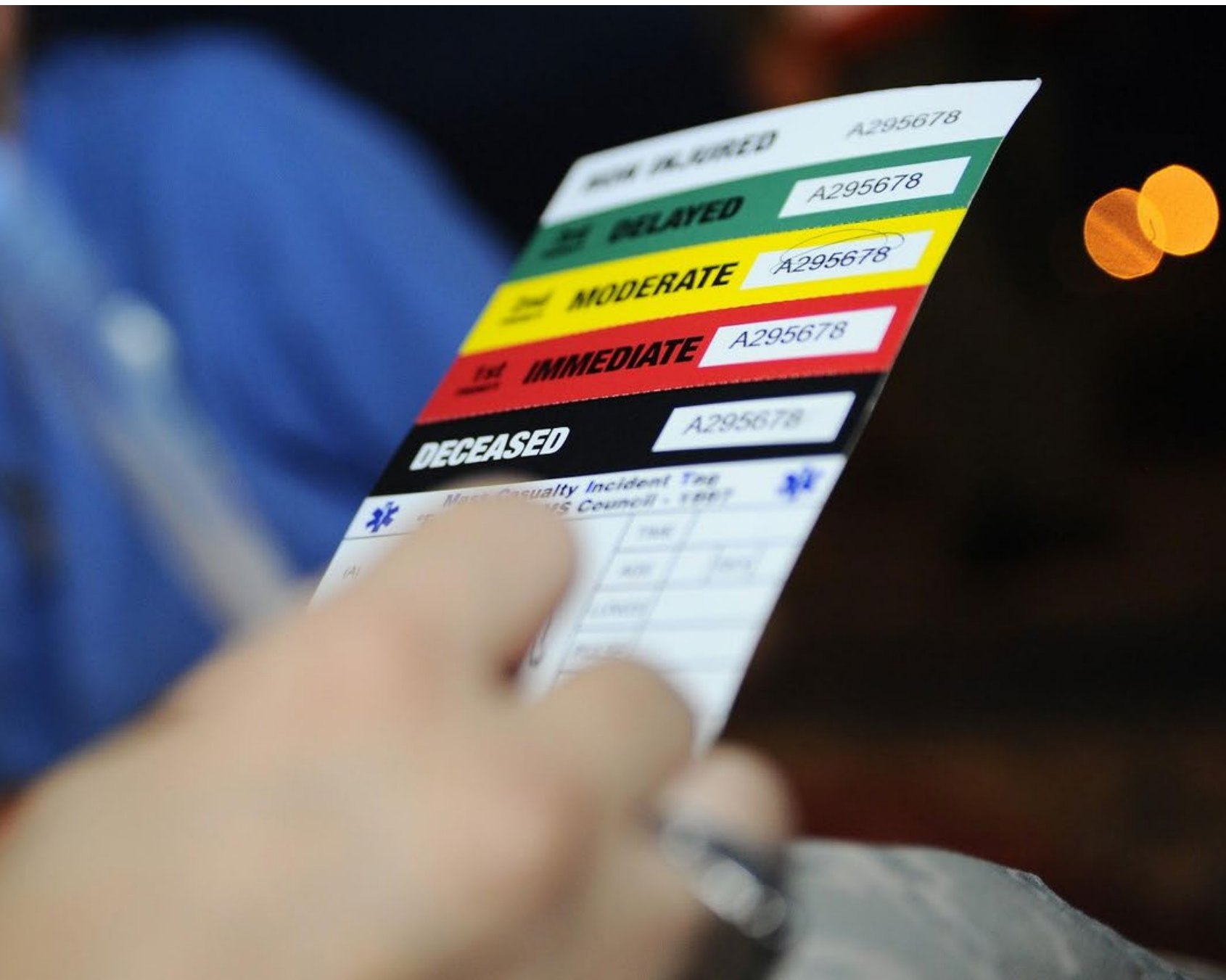


- Case management
- Ensuring access to school curriculum despite health barriers
- Collaboration with medical home and ensuring physician input for school health needs
- Supervision of unlicensed staff for direct care and procedures
- State - mandated screenings and assessments
- Operate under HIPAA and FERPA (Family Educational Rights and Privacy Act)





Role of School Nurses



Emergencies

- Lead general emergency training for school staff such as CPR/AED, Stop the Bleed, etc.
- Oversee Emergency/Medical team at school site including mass triage training
- Coordination with local EMS
- Communication to school district EOC
- Execution of school site safety plan in applicable areas
- Direct care of students and staff



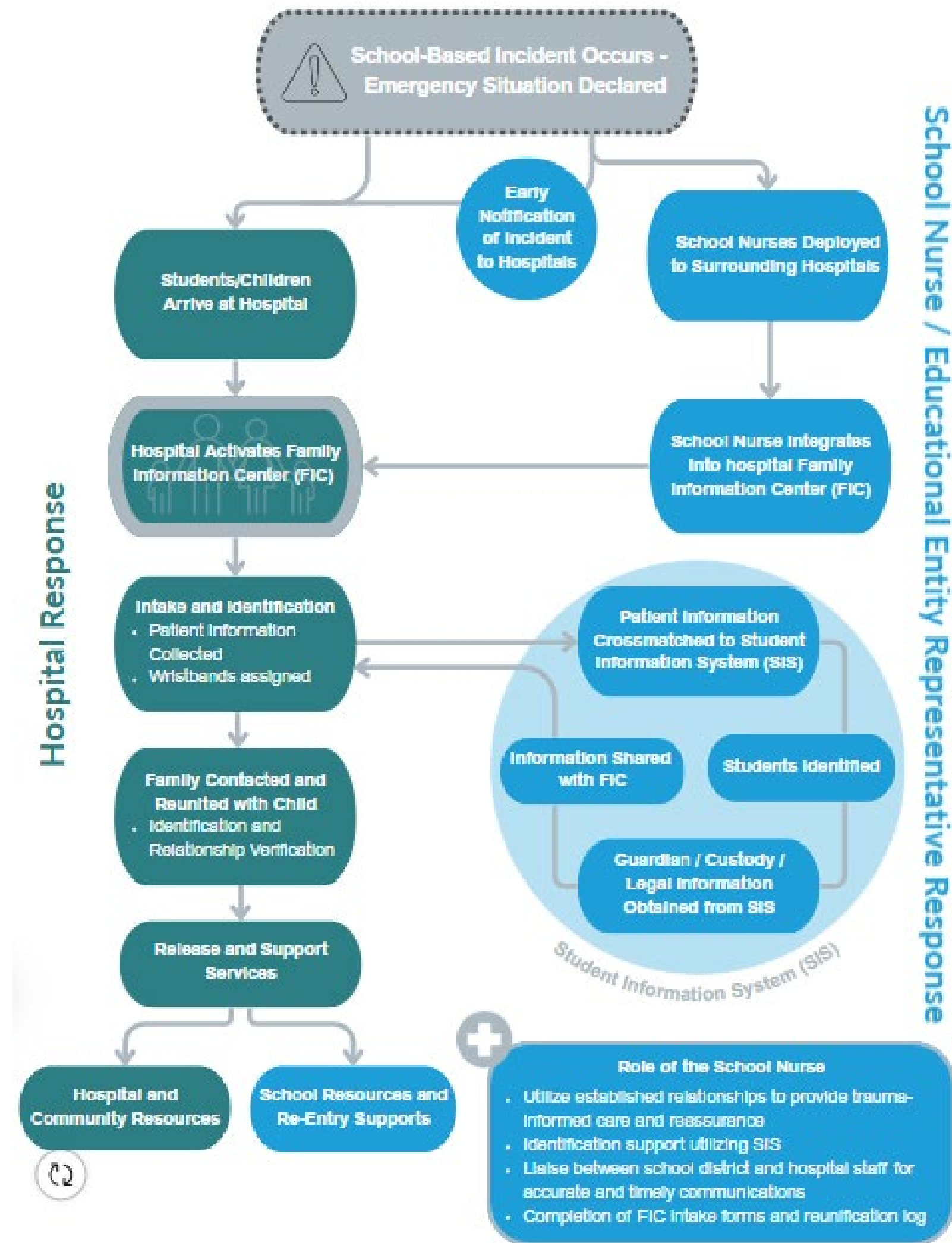


Role of the Hospitals

- Specialized medical support during disasters
- Medical Logistical management of mass casualty incident surge events
- coordination for efficient response
- Offering additional resources and expertise
- Establishment of hospital Family Information Center (FIC)
- Providing accommodation for responding school nurses



Pediatric Reunification Utilizing School Nurse Integration



Developing Comprehensive Plans



- Combining expertise and resources of both entities
- Crafting effective and integrated disaster preparedness plans
- Ensuring efficiency and effectiveness during and after emergencies

Exhibit "D" as Rider to Existing Agreement
(may also be utilized as a stand-alone agreement)

Memorandum of Understanding

Subject: Disaster Response Plan for Educational Entities

Established between **[School District or Educational Institution or Name]** and **[Hospital Name]**

1. Introduction

Purpose: This Memorandum of Understanding (MOU) outlines the roles and responsibilities of "Superintendent and/or designee" in partnering with hospitals during disaster response, specifically in identifying victims and unaccompanied minors.

Scope: This MOU applies to all educational entity representatives (including but not limited to school nurses) within the **[Educational Entity Name]** and their coordination with **[Hospital Name]**.

2. Roles and Responsibilities

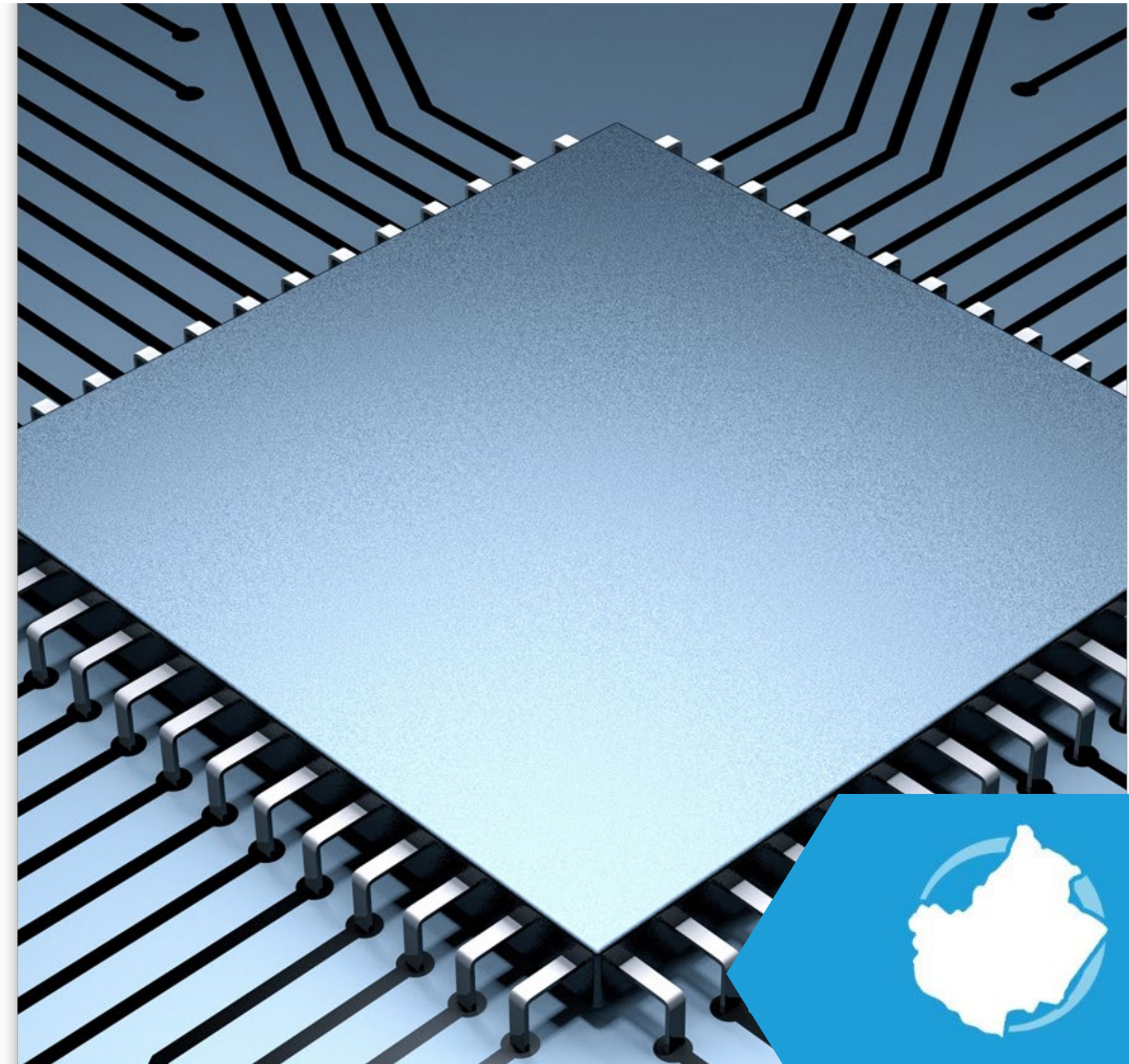
Educational Entity Representative (Authorized individual with access to student records)





Enhancing Communications

- Importance of clear and ongoing communication channels
- Strategies to improve coordination between schools and hospitals
 - Updated contact lists
 - Familiar points of contacts





Integrating Reunification

- Developing efficient processes to reunite families
- Overcoming challenges in reunification efforts
- Expediting victim identification
- Improved management of unaccompanied minors
- Enhanced access to accurate contact info of custodial parents/guardians





Strengthening Community Resilience

- Developing efficient processes to reunite families
- Overcoming challenges in reunification efforts
- Emergency Preparedness Interagency Collaborative exercises
- Networking with community partners



In Conclusion



To o l k i t

- Collaboration
- Roles & responsibilities
- Plan development
- Integrating processes
- Strengthening community resilience





questions





Thank You!



Shadlie Kensrue, MSN, RN, CSN, PHN
Director, Health Services
Irvine Unified School District
Shadliekensrue@iusd.org



Chris Riccardi, CHSP, CHEP
Manager, Emergency Management &
Business Continuity
Rady Children's Health, Orange
criccardi@choc.org

