

Meeting the Need for Pediatric Patient Surge Preparedness

Brigitte Glines, CA-PEM, IAEM-CEM, DVM

Hub Manager

USCSF Pediatric Pandemic Network

Christopher Riccardi, CHSP, CHEP

Manager of Emergency Management and Business Continuity

Children's Health of Orange County (CHOC)



Presenter

Brigitte Glines, CA-PEM, IAEM-CEM, DVM

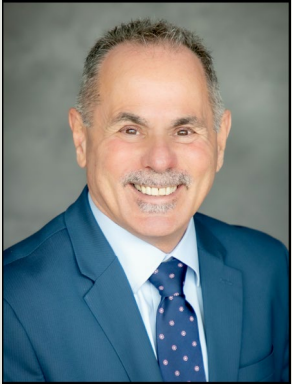
Hub Manager

USCSF Pediatric Pandemic Network

Dr. Brigitte French is the University of California- San Francisco Hub Program Manager for the Pediatric Pandemic Network (PPN), an all-hazards network of children's hospitals in diverse regions of the United States. The vision of the PPN is for all children and families to receive high-quality, equitable pediatric care in everyday emergencies, disasters, and global health threats. She was commissioned into the United States Air Force in 2005 as a Public Health Officer and transitioned to civilian healthcare emergency management in 2015. Dr. French became a Certified Emergency Manager with the International Association of Emergency Managers in 2017 and earned her California Professional Emergency Management certification in 2023.



Presenter



Christopher Riccardi, CHSP, CHEP Manager of Emergency Management and Business Continuity Children's Health of Orange County (CHOC)

Mr. Riccardi's responsibilities include the development, implementation, and management of Emergency Management planning and exercises and of the enterprise-wide Business Continuity Program. He serves as Chair of the Southern California Pediatric Disaster Coalition developing best practice resources for pediatric hospitals. Mr. Riccardi also serves as Chair of the Health Care Coalition of Orange County's Hospital Advisory Committee. He was the visionary behind the 15 'til 50 project – a nationally recognized best practice in health care mass casualty incident response planning. Chris is a certified health care safety and emergency management professional.



Disclosure of Relevant Financial Relationships

Brigitte Glines, CA-PEM, IAEM-CEM, DVM reports no relevant financial relationships or relationships she has with ineligible companies of any amount during the past 24 months.

Christopher Riccardi, CHSP, CHEP reports no relevant financial relationships or relationships he has with ineligible companies of any amount during the past 24 months.

Agenda

- Overview
- 15 'til 50 Background
- Purpose and Goal(s)
- Kids are DIFFERENT than Adults
- Components of Pediatric 15 'til 50
- Lessons Learned
- Questions



Overview

- **The need:**
 - Increase in Mass Casualty Incidents (MCI) e.g., natural disasters, train derailments, mass shootings
- **The current landscape:**
 - Staffing challenges
 - Mental health crisis
- **The fix:**
 - An easy-to-implement MCI response program



15 'til 50 Background

- How it all got started...over dinner
- A program designed to enable hospital staff to receive a surge of 50 or more patients within 15 minutes of notification of an MCI
- Nationally adopted program



Polling Question

Do you have an existing Pediatric MCI Surge Plan?

Purpose & Goal of Peds 15 'til 50

- **Purpose:**
 - Disparity in pediatric vs. adult preparedness and capabilities
 - Filling a glaring gap that was exacerbated during COVID-19 and winter viral surge
 - To equip healthcare EMs with a written Peds Surge plan and process
 - Use existing tools for ease of integration
- **Goal:**
 - Can be used as a stand-alone plan or annex to existing plan(s)
 - Not another checklist!!!
 - Easily adaptable to any facility
 - Replete with peds resource links

2024 DISASTER PLANNING CONFERENCE

PASADENA

Pediatrics vs Adults



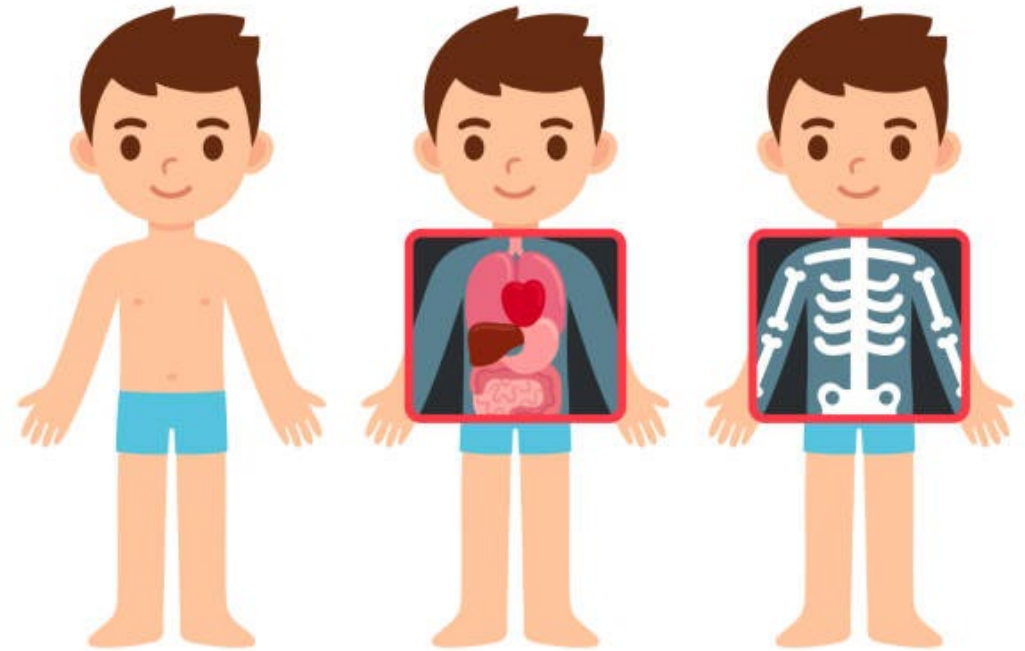
Are Kids Really *THAT* Different?

- Physical differences
 - Not just small adults
 - Medication dosing
 - Airway adjuncts
- Reaction in a disaster
- Decontamination protocol
- Potential for PTSD



Kids are Different Physically

- Head size
- Breathe more air for their size
- Closer to the ground
- Immature immune system



Children React Differently in a Disaster

- May run **to** the site of the incident
- Unable to follow directions
- Separation from parent/caregiver
- May not know full name
- May not know name of parent(s) nor address
- Anxiety
- Hysterical/acting out
- Quiet/distant



Children's Potential Contributors to PTSD



Signs of PTSD in Children and Teens



Nightmares



Insomnia



Increased irritability



Withdrawal from friends and beloved activities



Difficulty with school and concentrating



Depression and "numbness"

2024 DISASTER PLANNING CONFERENCE

PASADENA

Pediatric 15 'til 50 Surge Response



Set Up Time- 8:47





15 'til 50 Pediatric MCI Plan

15 'til 50 Pediatric Mass Casualty Incident Plan Template

TEMPLATE INSTRUCTIONS

The Plan Template provides an easy-to-populate document that can be used to create a Pediatric Mass Casualty Incident (MCI) Plan or supplement the existing MCI Plan for your facility.

This Plan Template should be used in conjunction with the companion 15 'til 50 Pediatric MCI Guide. The Guide offers step-by-step instruction on how to develop your plan. For each section and subsection within this Pediatric MCI Plan Template, corresponding page numbers are provided to the Guide with tips and an explanation of the information that should be provided in that area. Bracketed text is provided where healthcare facility specific information should be inserted.

Insert healthcare entity name
Insert plan version number
Insert date of last revision
Insert healthcare entity logo

Table Of Contents

See Guide, p. 7

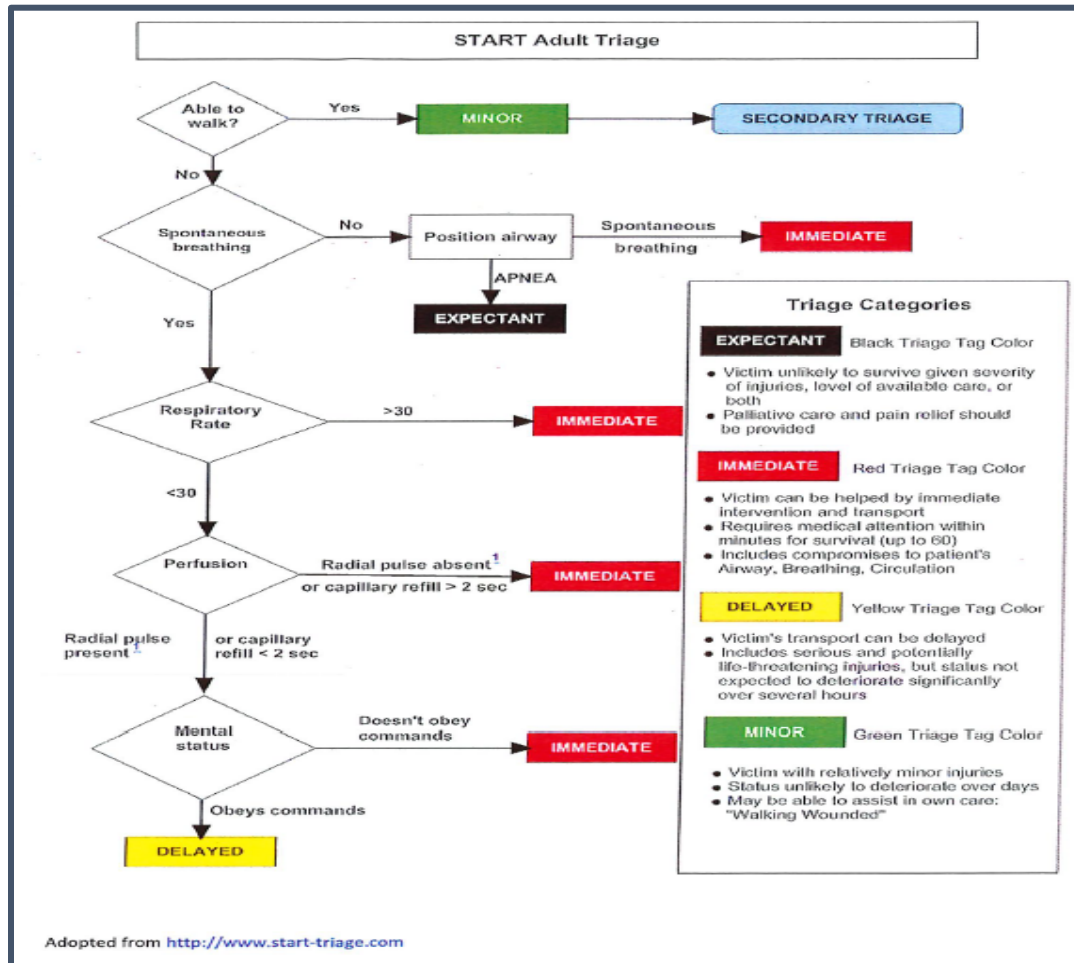
Acknowledgments.....	2
Table Of Contents.....	3
Acronyms.....	4
Introduction.....	5
Overview.....	5
Purpose.....	6
Scope.....	7
Assumptions.....	7
Pre-Incident.....	8
Training and Exercise Schedule.....	8
Supplies and Equipment.....	9
Activation.....	10
Authorization to Activate.....	10
Notification.....	10
Coordinate Staffing and Prepare Staff for Activation.....	11
Deploy Supplies and Equipment.....	12
Hospital Command Center.....	12
Operations.....	13
Triage.....	13
Treatment.....	16
Security.....	17
Patient Processing.....	19
Communications.....	19
At Risk Populations.....	20
Mental and Behavioral Health.....	23
Staff Support Services.....	23
Transition.....	24
Authority to Transition.....	24
Notify Stakeholders.....	25
Transition Operations.....	25
Appendices.....	27
Appendix A: Just in Time (JIT) Training.....	28
Appendix B: Pediatrics in Disaster Drills and Exercises.....	29
Appendix C: Pediatric Decontamination Algorithms.....	30
Appendix D: Pediatric Equipment and Supplies Checklists.....	31
Appendix E: Pediatric Triage Techniques.....	32
Appendix F: Pediatric Mental Health Resources.....	33
Appendix G: Child and Family Reunification.....	34
Appendix H: 15 til 50 Guide.....	35

Components

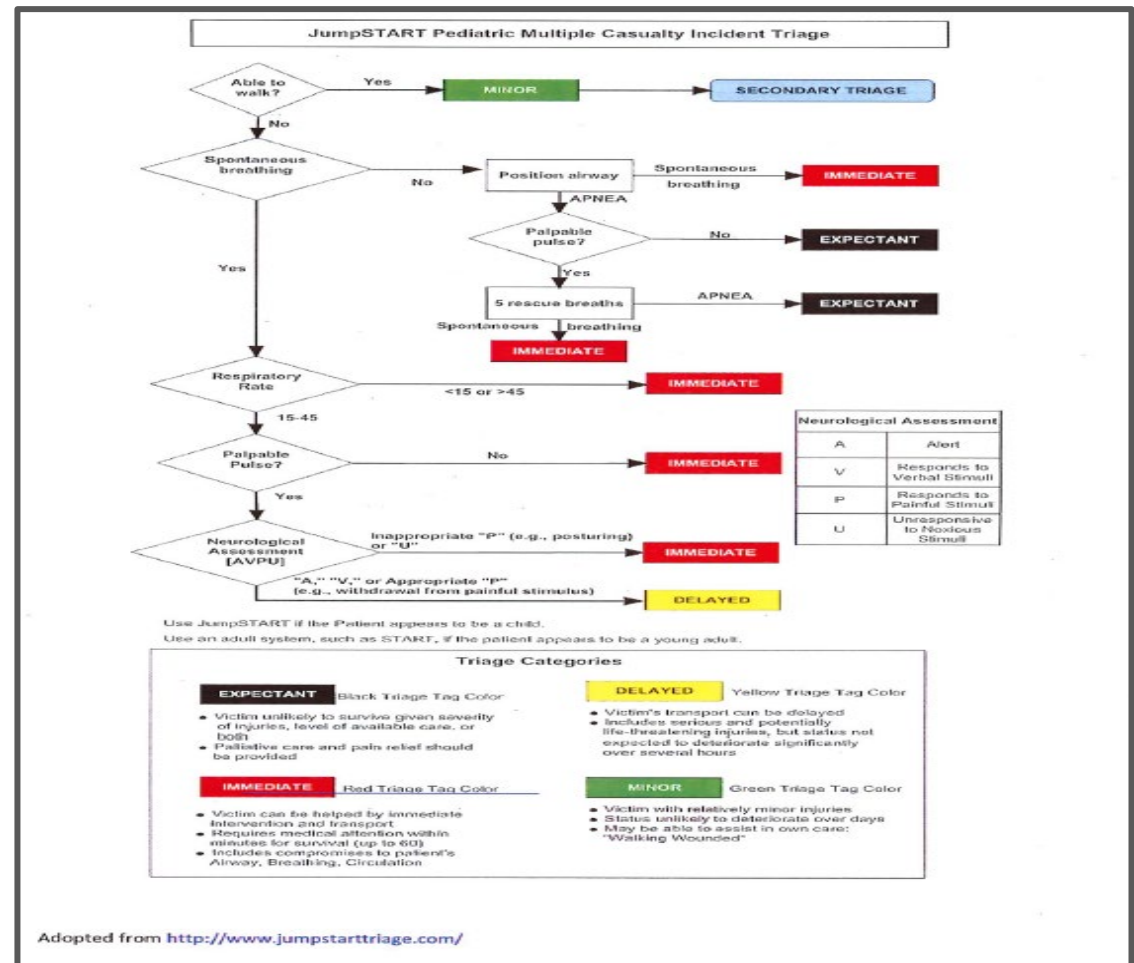


START/JumpSTART

Adult Triage



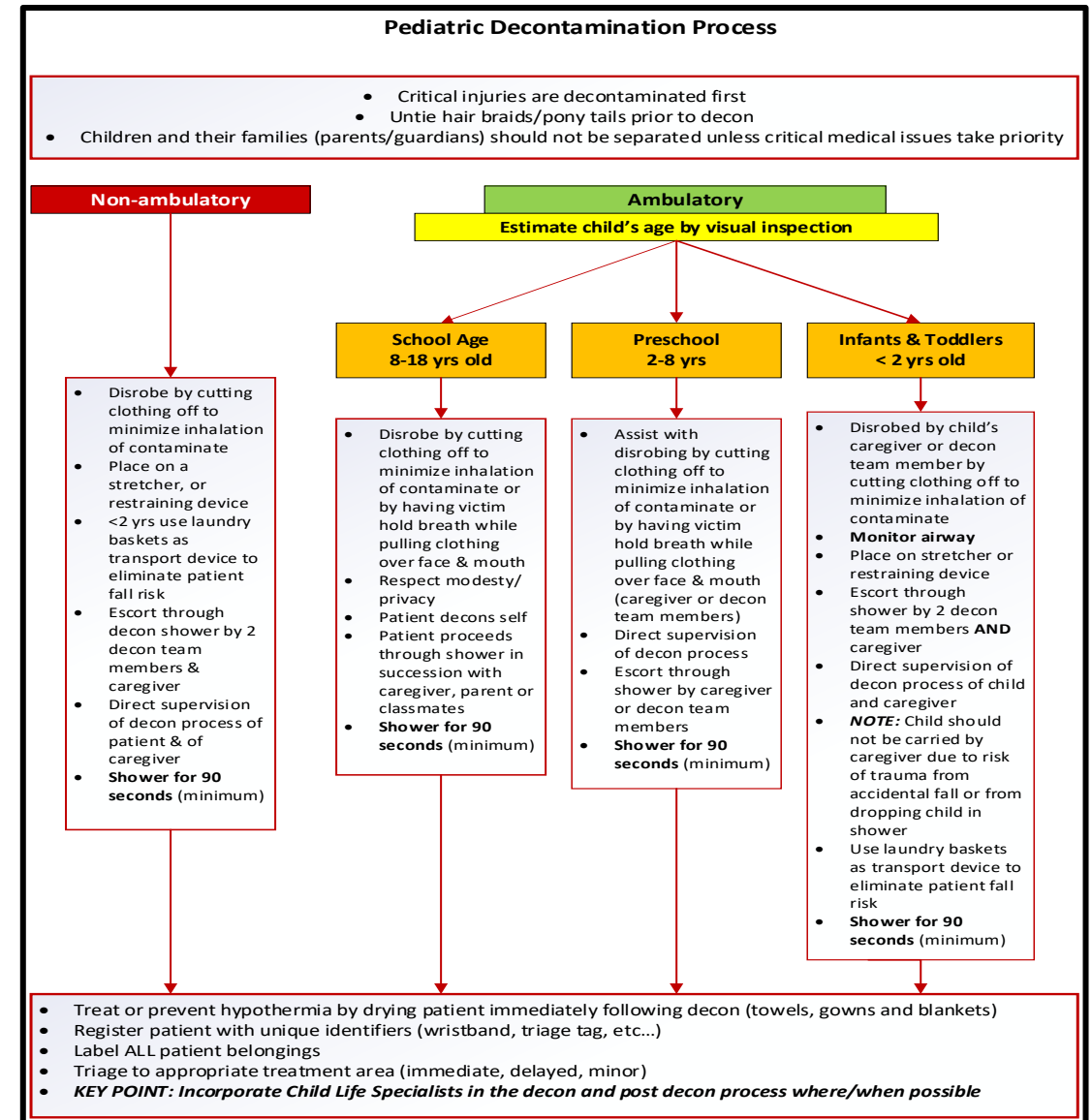
Peds Triage



Pediatric Decon Considerations

- Different ages = different considerations
- Infants/toddlers (<2yrs)
- Pre-School (2yrs-8yrs)
- School age (8yrs-18yrs)
- Special equipment needed
- Laundry basket pros and cons

Decon Process is an amalgam of best practices from NYU and PRISM Study



Additional Surge Plan Considerations

Space

- Identify minimum surge space needed
- Identify triggers to surge or downgrade response

Staff

- Identify additional staff needed to expand services
- Identify triggers to increase staffing per volume
- Staff messaging to dispel external news/concerns

Stuff

- Identify par level of PPE to expand services
- Identify triggers to ramp up/ramp down services based on supply and equipment availability
- Vendor diversification

- Not just for MCI
- Winter viral surge
- Enhancing surge capabilities
- Unaccompanied minors
- Identify surge space(s)
- Identify supply needs
- Identify staffing needs
- Identify triggers to implement the plan

2024 DISASTER PLANNING CONFERENCE

PASADENA

Lessons Learned



Lessons Learned-Pediatric Exercises

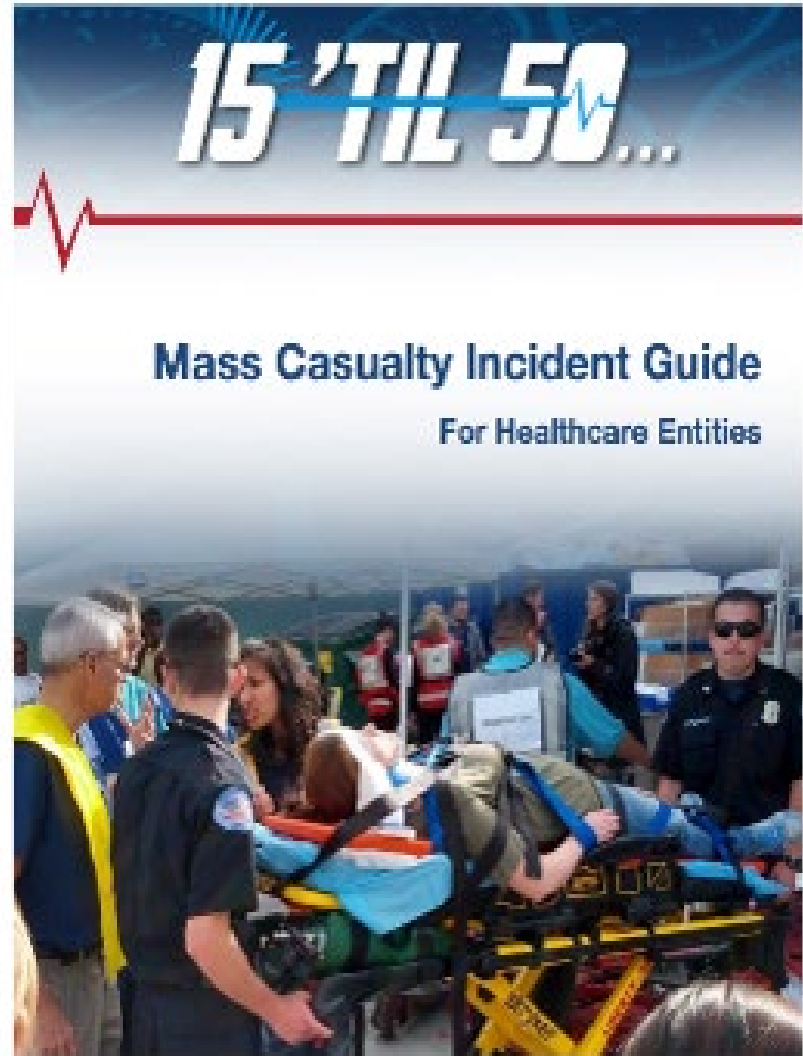
- Incorporate pediatrics into all exercises
- Establish unaccompanied minor location
- Ensure you assign a monitor for the children
- Periodic head counts
- Identify toys/distractions for all age groups
- Pediatric triage tags to assist with patient reunification
- Do not assume that you will be able to manage without practice
- Age 12-13 is optimal

Closing Comments

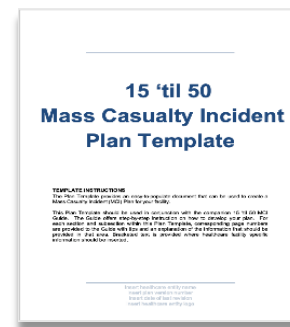
- Are we done yet?
 - NOT QUITE!
- Implement and test it
- Pediatric organizations can help
 - Pediatric Pandemic Network
 - WRAP-EM
 - Local Peds Center of Excellence
- Where is your closest children's hospital? 😊



15 'til 50 Resources



- Follows the format of the original 15 til 50 Program
- Components
 - Plan template
 - Guide
 - Toolkit library
 - Multimedia



15 Minutes Until 50 Patients		
Mass Casualty Incident Response Preparedness Items		
Model Number	Quantity	Description
381591	Package	Hospital Surge Kit with Target 07 piece
381512	Package	Triage Treatment Area Target 0 piece
381510	Package	HICS 2014 Vest Kit, L, 76 piece
381578	Package	HICS 2014 Vest Kit, M, 26 piece
381519	Package	HICS 2014 Vest Kit, S, 8 piece
5N193	6	10' x 10' Instant Canopy
297M90	50	350 Lb. Capacity Kwik Cots
191987	10	400 Lb. Capacity Kwik Cots
9T101	3	Metro Chrome Plated Wire Shelving
21421	3	Metro Mobile Wheel Unit Kits for Shelving
5UN76	3	Metro Shelf Back Lodge
5N811	1	Medical Cylinder Cart (12 capacity)
352200	1	Federico Corp Cart
6U15	2	Dressing Cart
228A7	1	Red Basket Truck 36"
223P9	1	Yellow Basket Truck 36"
8A1M8	1	Green Basket Truck 36"
8A1N1	1	Black (Trim) Basket Truck
311G1	24	Orange Traffic Cones (42" Height)
151041	2	Mobile Reversible Dry Floor Rolly (40" x 10")
313P1	4	Portable Tool Boxes

15 Minutes Until 50 Patients		
Mass Casualty Incident Response Preparedness Items		
Model Number	Quantity	Description
381591	Package	Hospital Surge Kit with Target 07 piece
381512	Package	Triage Treatment Area Target 0 piece
381510	Package	HICS 2014 Vest Kit, L, 76 piece
381578	Package	HICS 2014 Vest Kit, M, 26 piece
381519	Package	HICS 2014 Vest Kit, S, 8 piece
5N193	6	10' x 10' Instant Canopy
297M90	50	350 Lb. Capacity Kwik Cots
191987	10	400 Lb. Capacity Kwik Cots
9T101	3	Metro Chrome Plated Wire Shelving
21421	3	Metro Mobile Wheel Unit Kits for Shelving
5UN76	3	Metro Shelf Back Lodge
5N811	1	Medical Cylinder Cart (12 capacity)
352200	1	Federico Corp Cart
6U15	2	Dressing Cart
228A7	1	Red Basket Truck 36"
223P9	1	Yellow Basket Truck 36"
8A1M8	1	Green Basket Truck 36"
8A1N1	1	Black (Trim) Basket Truck
311G1	24	Orange Traffic Cones (42" Height)
151041	2	Mobile Reversible Dry Floor Rolly (40" x 10")
313P1	4	Portable Tool Boxes

Peds Resources

- <https://wrap-em.org/index.php/pediatric-surge>
- <https://resources.pedspandemicnetwork.org/>
- <https://emscimprovement.center/domains/preparedness/>
- https://www.aap.org/en/patient-care/disasters-and-children/?srsId=AfmBOopQZ5XvLmxtJD3LICKays87g7Ob6NFfhr_CZCd_sMYy8_83ugJV



EIIC
EMSC Innovation and
Improvement Center



Set Up Time- **13:25**



Questions?



Disclosure

The original “15 ‘til 50” project was sponsored by the Los Angeles County Emergency Medical Services Agency and funded in part by the Hospital Preparedness Program, U.S. Department of Health and Human Services (HHS), Assistant Secretary for Preparedness and Response (ASPR) grant funding. This award has been assigned the federal award identification number (FAIN) U90TP000516.

Thank You!

Many thanks for the opportunity to share this information with you. Please feel free to reach out to either of us with any further questions.

We would love to hear of your successes and or challenges in implementing this plan/program in your facility.

Contact Information

Brigitte Glines

Brigitte.French@ucsf.edu

Christopher Riccardi

criccardi@choc.org