

# Maui's on Fire! The Coalition's Emergency Response

**Marc Moriguchi, EMTP**

Director

Hawaii Healthcare Emergency Management



1

## Presenter



**Marc Moriguchi, EMTP**

**Director**

**Hawaii Healthcare Emergency Management**

Mr. Moriguchi was promoted to Director with the Hawaii Healthcare Emergency Management in 2020. He is a licensed paramedic in the state of Hawaii with 33 years of experience in prehospital care and 14 years as a Federal Disaster Medical Assistance Team (DMAT) member.



2

## Disclosure of Relevant Financial Relationships

Marc Moriguchi, EMTP, reports no relevant financial relationships or relationships he has with ineligible companies of any amount during the past 24 months.



2024 DISASTER PLANNING CONFERENCE | 3

3

## Hawaii Visitor Statistics

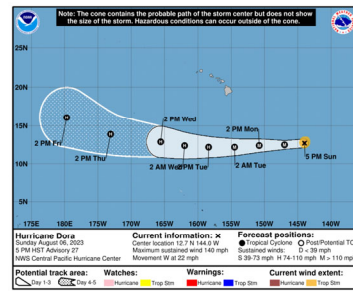
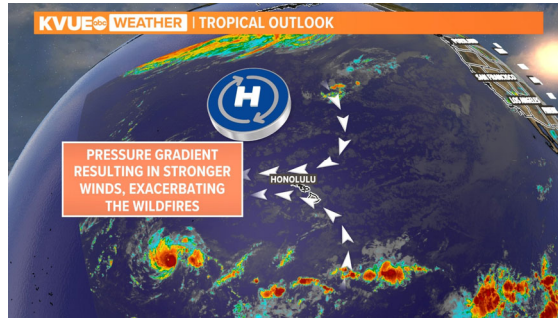
- 10 million visitors in 2023
  - 860,831 in December 2023
- Average daily census on Maui: 23,633 in September 2023
  - 56,307 visitors in September 2022 (-58%)
  - Maui county population is 164,351 (2022)
  - Population of Lahaina 12,906 (2022)
- Average daily visitors 766,023 with an average stay of 8.67 days



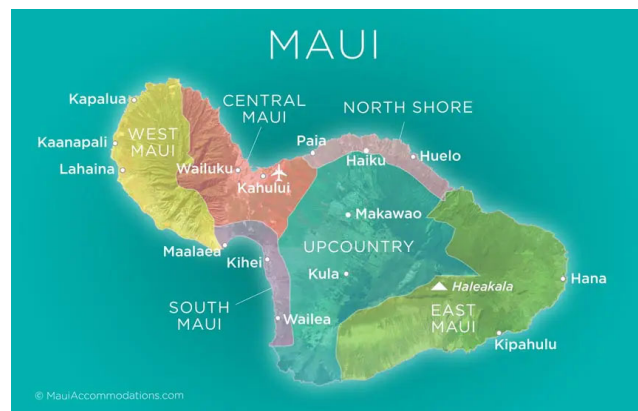
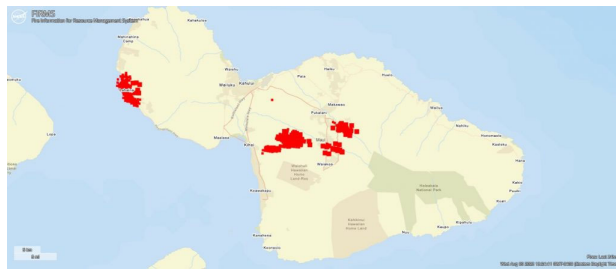
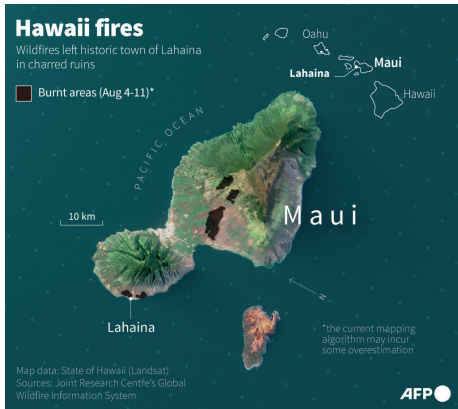
4

# Hurricane Dora 2023

- A small, long-lived hurricane
- Played an indirect meteorological role in the Maui wildfires



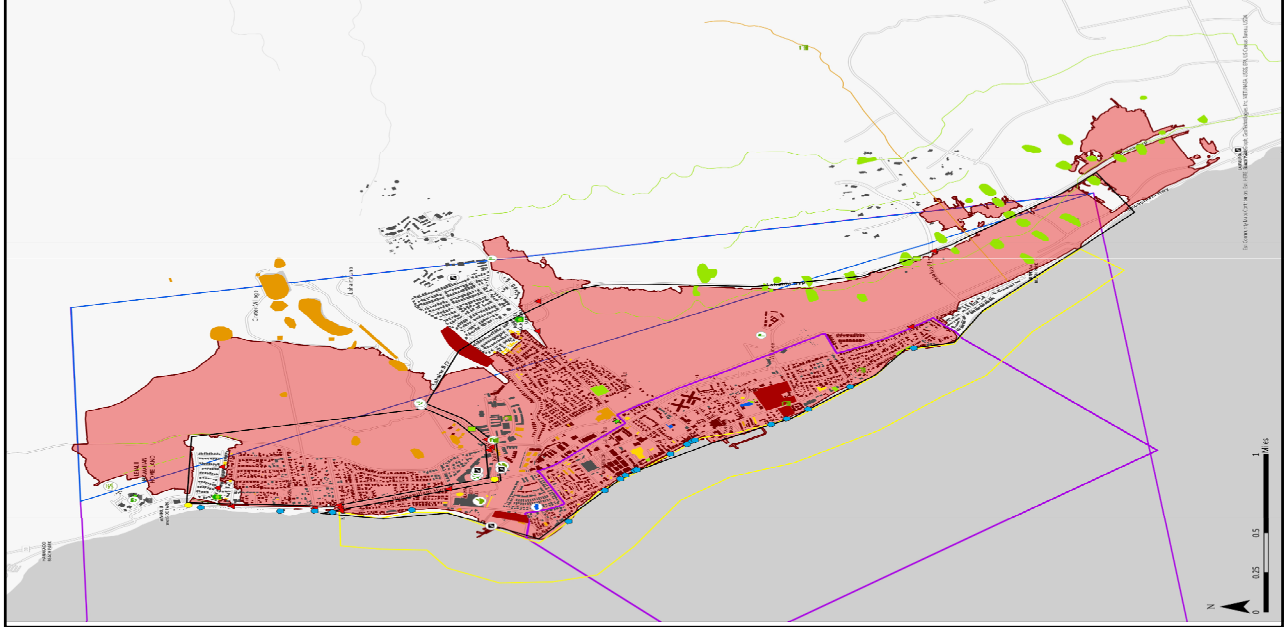
5



Haleakala 10,000 ft  
 Kula 1,200-2,800 ft  
 West Maui Mountain 5,700 ft

6

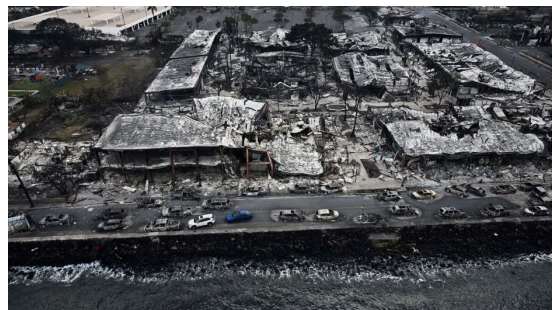
As of 19 AUG 2023 1600HST



7

## Coalition Response to Maui Wildfire

- Hawaii Healthcare Emergency Management (HHEM) was in the Maui EOC within 24 hours of the incident
- Continuity of Health Care Service
  - Staffing issues, X-ray tech
    - Volunteer contact info
  - Logistical support
  - Kula hospital water issues
- Surge response
  - Dialysis redistribute patients to other clinics
  - Helped dialysis find missing patients
    - Red Cross shelters
  - Coordinated transport though roadblocks



8

## After Action Report:

### Major Strengths:

- Maui Memorial Medical Center response to medical surge and coordination with Oahu hospitals.
- HHEM deployed staff to Maui Emergency Management Agency (MEMA) EOC within 24 hours of the incident
- Logistical and resource coordination to members
  - Kaiser mobile clinic
  - Supplies for Dialysis and AMR
- Oahu hospitals prepared for and received patients.
- Hospitals willing to release staff to Maui Memorial Medical Center (MMMMC) to help.

### Areas for improvement:

- Availability of District Health Office (DHO) at MEMA
- Volunteer Management & Coordination

### After Action Review



### Maui Wildfires 2023

Real World Incident

Hawai'i Healthcare Emergency Management Coalition

August 29, 2023

The Maui Wildfires Incident response is funded in part with the financial support of the U.S. Department of Health and Human Services, Assistant Secretary for Preparedness and Response, Hospital Preparedness Program as authorized by section 319C-2 of the Public Health Service (PHS) Act, as amended by the Pandemic and All-Hazards Preparedness Act (PAHPA) (P.L. 109-417).

HHEM Maui Wildfires 2023 AAR v1

9

## Surge Strategies

HHEM PEDIATRIC SURGE PLAN



Hawaii Healthcare Emergency Management Coalition Pediatric Surge Plan

December 2020

Reference for hospitals

- Western Region Burn Disaster consortium
- What hospitals are designated trauma centers
- Hospital Burn Triage flowcharts
- Exercises

### PEDIATRIC BURN GUIDELINES



Resources to provide quality care to the pediatric burn patient.

HAWAII PACIFIC HEALTH KAPOLANI MEDICAL CENTER FOR WOMEN & CHILDREN

No. 601

10

## Family Reunification:

- Maui county put up a number to call to report missing people.
  - List grew to over 1,000 people. This diverted calls from 911 and the hospitals.
- Family reunification center was done by FEMA and AG office.



Family Assistance Center @ Lahaina Civic Center



Missing person signage

11

## Workforce Safety

### Disaster response & Safety:

- Mental Health
- Not just for first responders but first receivers.

FOR **DISASTER RELIEF** WORKERS AND **FIRST RESPONDERS:**

“You are coming home to a normal life, and people don’t understand **what you feel**, what you’ve seen.

And it’s important to have the opportunity **to be understood.**

This work changes how we express ourselves and view life and **how we view ourselves in life.**”

12

## Key Takeaways:

- Relationships are key to any disaster and are essential for organizations that serve the public.
- Understanding work language/culture
  - Military vs civilian
- Information sharing and resource sharing
- Volunteer and donations management
- Set up a hotline (211) as soon as possible
- Include social media as part of your response
- Government traditionally moves slow
  - What other agencies/organizations can move faster and mobilize?

13

## Hawaii & Sharing Part of the Culture



Double and triple decker kaukau (eat) tin or Plantation workers lunch pale

14

# Questions?



15

## Thank you

**Marc Moriguchi, EMTP**

Director

Hawaii Healthcare Emergency Management

[mmoriguchi@hhemc.net](mailto:mmoriguchi@hhemc.net)



16