

# Beyond the Health Fair: Community Engagement for Long-Term Rewards

Jacqueline Barton True, MSW, MPH  
Beth Zborowski  
Washington State Hospital Association



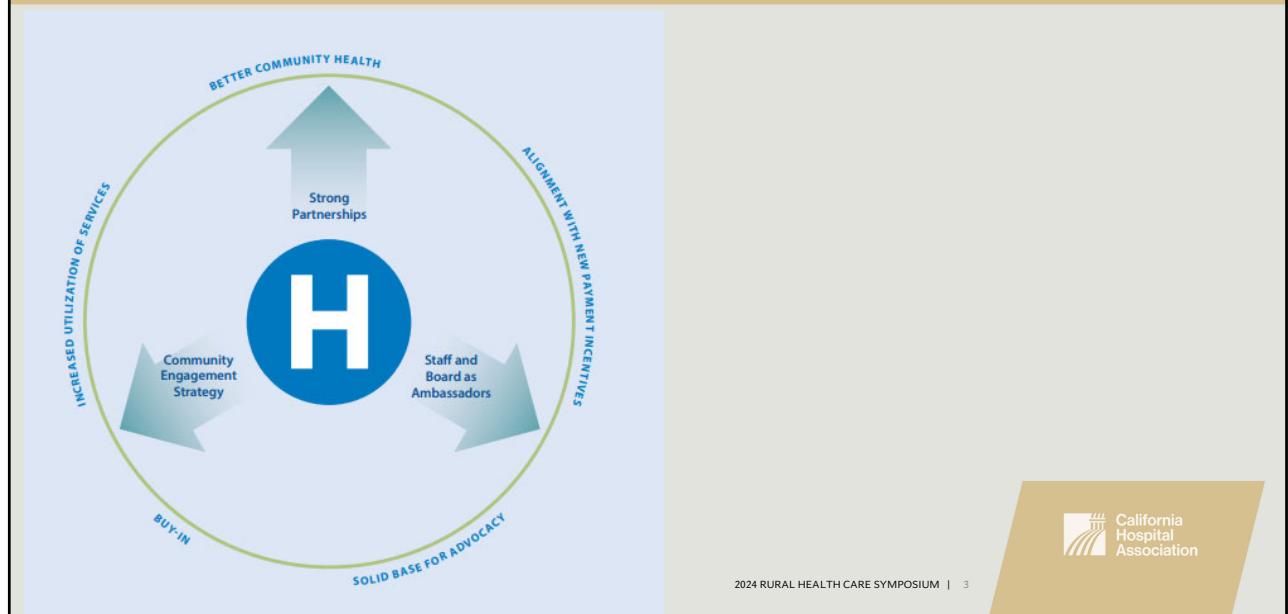
1

## Building a Strong Foundation



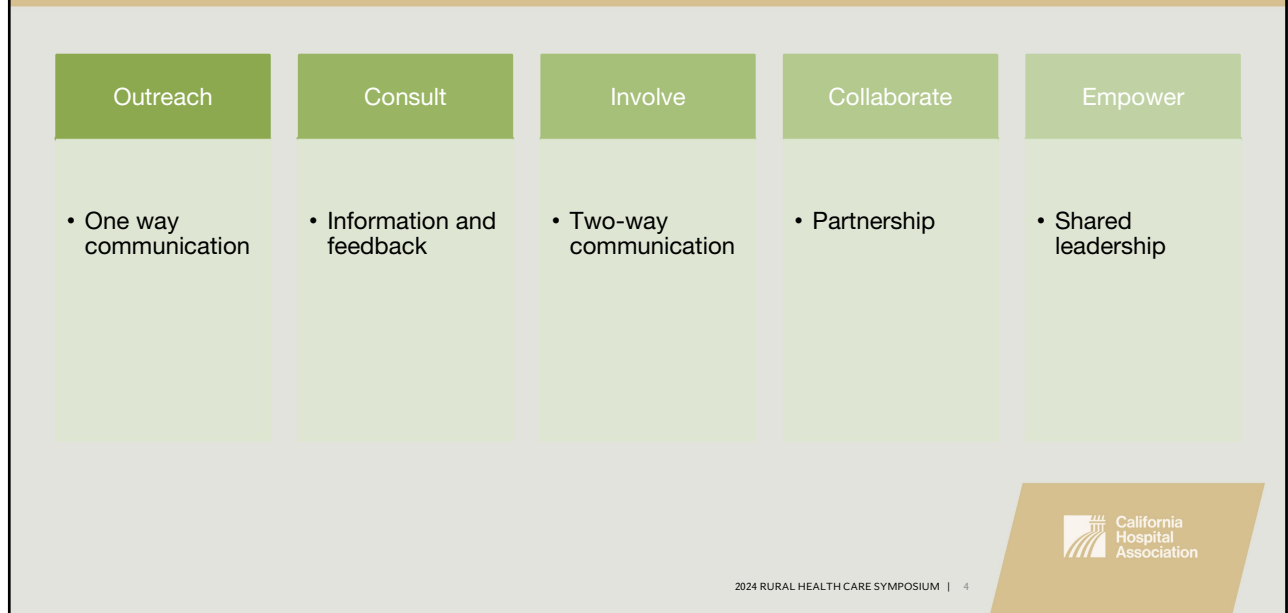
2

# What do you put in and what do you get out?



3

# Engagement Continuum



4

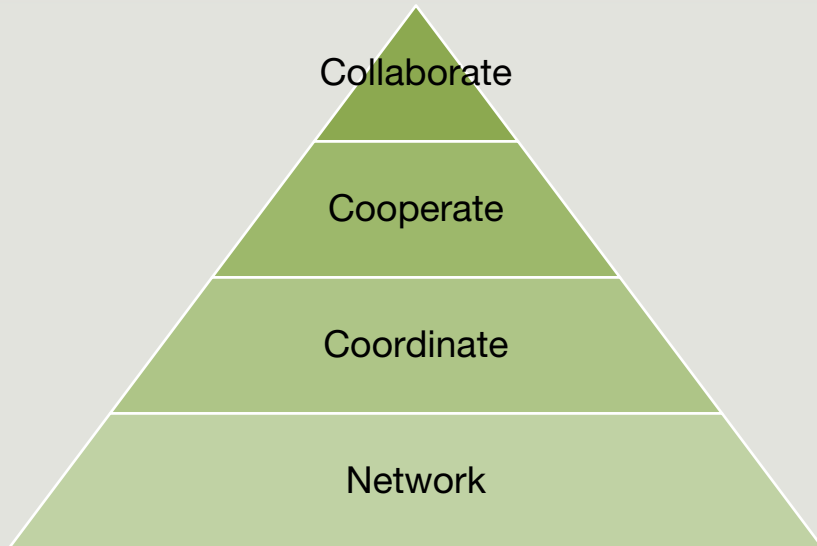
## Who are your partners?



2024 RURAL HEALTH CARE SYMPOSIUM | 5

5

## What level of engagement?



2024 RURAL HEALTH CARE SYMPOSIUM | 6

6

## Best Practice: Coulee Medical Center Powwow

Coulee Medical Center and the Board of Commissioners  
*in partnership with*  
The Colville Tribal Health Program

### Our First Annual Gathering of Wellness Powwow


i? sy'fa? xl sx'ix'w'aitet  
We gather for our wellness  
*Naheem - Changan/Coulee*

Master of Ceremonies - Dan Nanamkin  
Host Drum - S'axatk'w (Fast Waters)

September 16, 2016  
10am to 2pm

Grand Entry at 10am

Everyone Welcome!!



2024 RURAL HEALTH CARE SYMPOSIUM | 7

7

## How do you know if it's working?

desired  
accomplishment  
success. noun  
accomplish  
achieving  
never

2024 RURAL HEALTH CARE SYMPOSIUM | 8

8



2024 RURAL HEALTH CARE SYMPOSIUM | 9



# 2024 RURAL HEALTH CARE SYMPOSIUM

RANCHO BERNARDO INN

## Questions?



# 2024 RURAL HEALTH CARE SYMPOSIUM

RANCHO BERNARDO INN

## Thank You

### **Jacqueline Barton True, MSW, MPH**

Vice President, Advocacy and Rural Health

Washington State Hospital Association

[jacquelineb@wsha.org](mailto:jacquelineb@wsha.org)

### **Beth Zborowski**

Senior Vice President, Membership Engagement and  
Communications

Washington State Hospital Association

[bethz@wsha.org](mailto:bethz@wsha.org)

