



California Hospital Association

2023 Annual Meeting



California Department of Public Health

AGENDA

Introductions

Executive Team

Program Flex Updates

Title 22 Update

Q&A

Introductions – CDPH Speakers

Cassie Dunham

Deputy Director

Cassie.dunham@cdph.ca.gov



Cassie Dunham is the Deputy Director for CHCQ. She has been with the Center for 14 years serving in various roles including Policy and as Chief of Field Operations for Northern California which includes offices from Bakersfield to the Oregon border.

Cassie is a firm believer in elevating the quality of health care across all disciplines beyond the minimum standards. She is driven by the opportunity to promote equity and safety for those who find themselves most vulnerable in accessing health care services for ongoing wellness and in times of crisis.

A Californian native, Cassie began her career in operations and regulatory compliance in private healthcare settings, spanning roughly 17 years prior to state service.

Introductions – CDPH Speakers

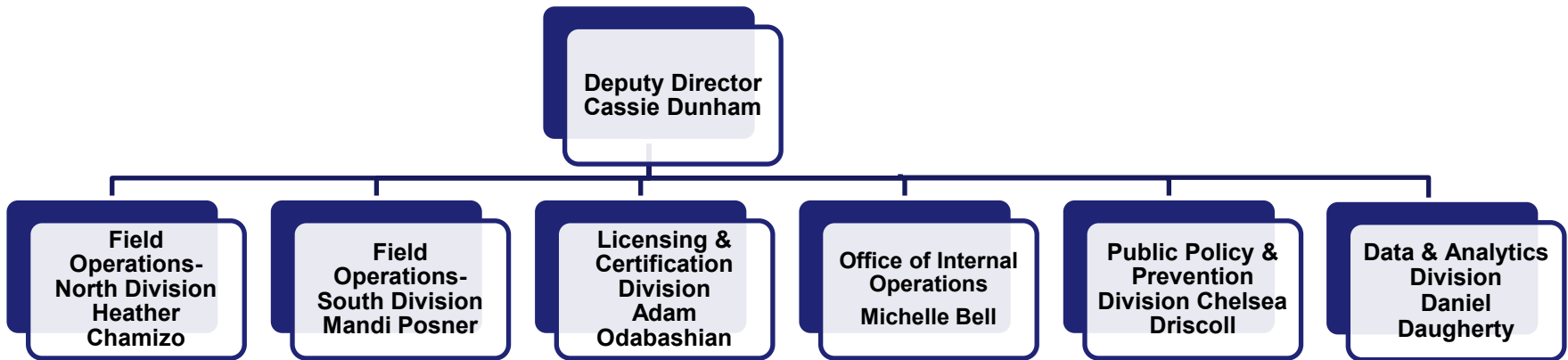
Chelsea Driscoll

Branch Chief, Public Policy & Prevention Division
Chelsea.driscoll@cdph.ca.gov



Chelsea Driscoll is Chief over the Public Policy & Prevention Division within CHCQ. She has served in various positions within the Center for 11 years. Prior to joining CHCQ, Chelsea worked at the Department of Social Services in various roles including program policy development, government and legislative affairs and development of the local assistance budget. She has over 20 years of experience in legislative and public policy development in a variety of policy areas including, health care, social services and public safety.

EXECUTIVE TEAM





Program Flex Update

2023 Annual Meeting



California Department of Public Health

Program Flex Update

- CPFU has processed 1455 General Acute Care Hospital (GACH) program flexes since January 2022
- Overall positive feedback on the use of RSS and collaboration with the Centralized Program Flex Unit (CPFU)

Program Flex Update

Top Five Regulations Requested:

- Title 22 section 70805 Space Conversion
- Title 22 section 70809 (a) Patient Accommodation Over Bedding
- Title 22 section 70809 (b) Patient Accommodation Classification of Beds
- Title 22 section 70723 Annual TB Testing for Staff
- Title 22 section 70853 Electrical Sensitive Areas

Common Concerns for GACH's

- Submission lack detail on alternative concepts, and it is unclear what the facility is asking for
- Incorrect regulation used
- Does not explain how the facility plans to meet the intent of the regulation
- Attaching a document for alternative concept, rather than entering in the box provided
- Lack of coordination with HCAI for space program flexes

Helpful Hints for Facilities

- Justification section should be filled out with the rationale for the requested plan provided in the alternative concept
- Provide direct phone numbers for the point of contact for the flex

Helpful Hints for Facilities for Space Program Flexes

- More supporting documentation may be requested, i.e., maps, census data, equipment availability
- CPFU may ask District Office to do an on-site to ensure space is safe

Trends Being Seen

- Corporate submission/processing for TB flexibility and AFL 19-28 through cloning
- Variations in space flexibilities post PHE and during transition
- RSV/COVID/Flu seasonal – flexibility during PHE ending transition

CPFU Reminders

- Improve consistency in approach to case review and decision making
- Take a collaborative approach when working with facilities to obtain additional information
- Understand the operational needs of the facility and take a practical approach while maintaining patient safety

CPFU Reminders

- Improve consistency in approach to case review and decision making
- Take a collaborative approach when working with facilities to obtain additional information
- Understand the operational needs of the facility and take a practical approach while maintaining patient safety



Title 22 Update

2023 Annual Meeting



California Department of Public Health

Title 22 Regulations

GACH Packages in Development:

- Dietary, Pharmacy and Clinical Labs
- Infection Control and Physical Plant
- Medical and Employee Records, Administration and Medical Service
- Emergency Department, Burn Center, Observation

Questions and Answers



THANK YOU!